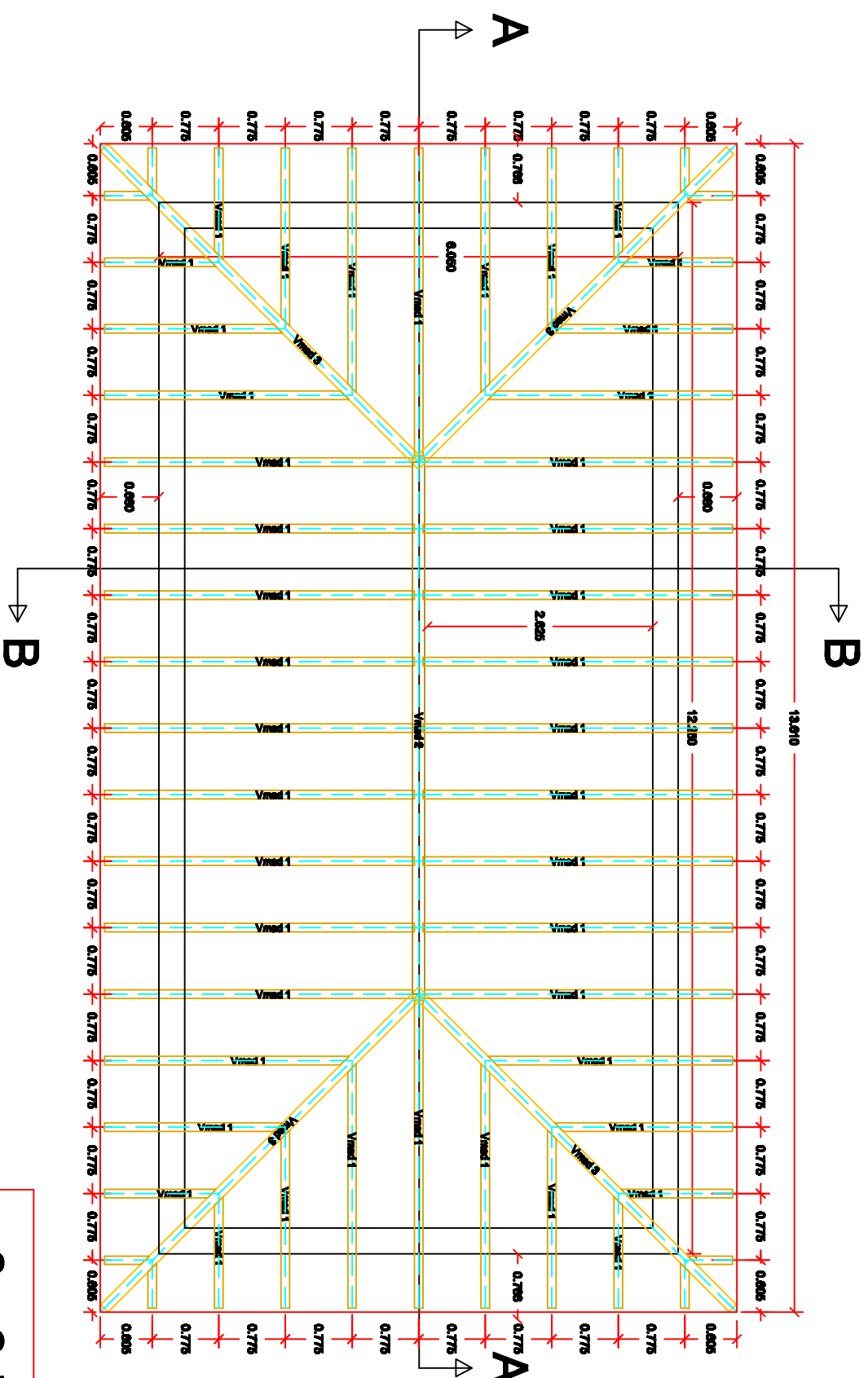


# ESQUEMA TARRASSA

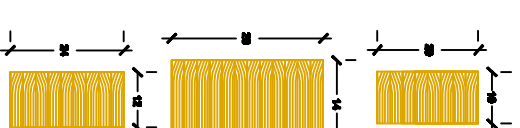


Sup Cubierta: 105,28 m<sup>2</sup>

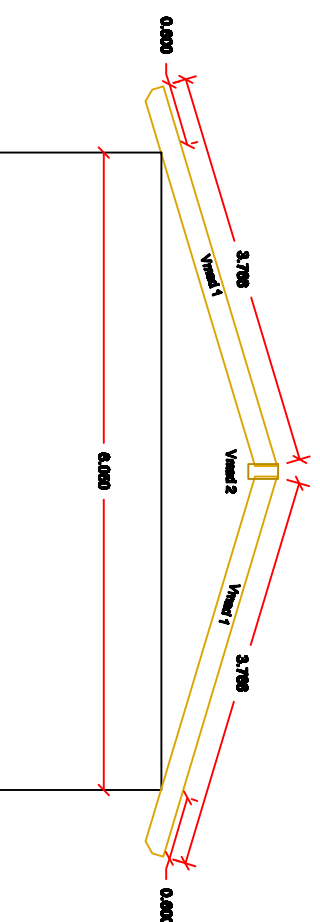
Vigas laminadas:  
Vimed 1  
Altura: 20 cm  
Ancho: 10 cm

Vigas laminadas:  
Vimed 2  
Altura: 28 cm  
Ancho: 20 cm

Vigas laminadas:  
Vimed 3  
Altura: 24 cm  
Ancho: 12 cm



SECCION B-B



SECCION A-A

